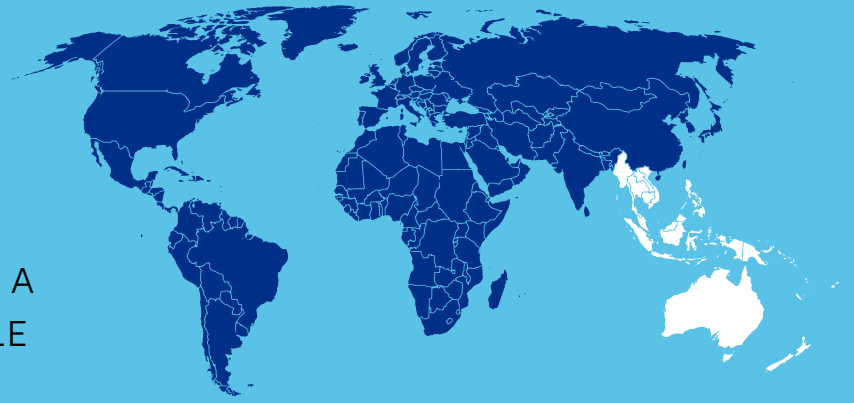
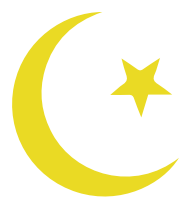


SOUTHEAST ASIA

MORE THAN 615 MILLION SOUTHEAST ASIAN SOULS REPRESENT 2,626 INDIGENOUS PEOPLES, EACH WITH THEIR OWN LANGUAGE, HERITAGE, AND IDENTITY. ALTHOUGH THE MAJORITY IDENTIFY WITH A MAJOR WORLD RELIGION, ANIMISM—WORSHIP OF SPIRITS—IS AT THE CORE OF WHAT MOST PEOPLE TRULY BELIEVE. LESS THAN 5 PERCENT KNOW CHRIST AS THEIR LORD AND SAVIOR.



PRIMARY RELIGIONS



ISLAM
37%



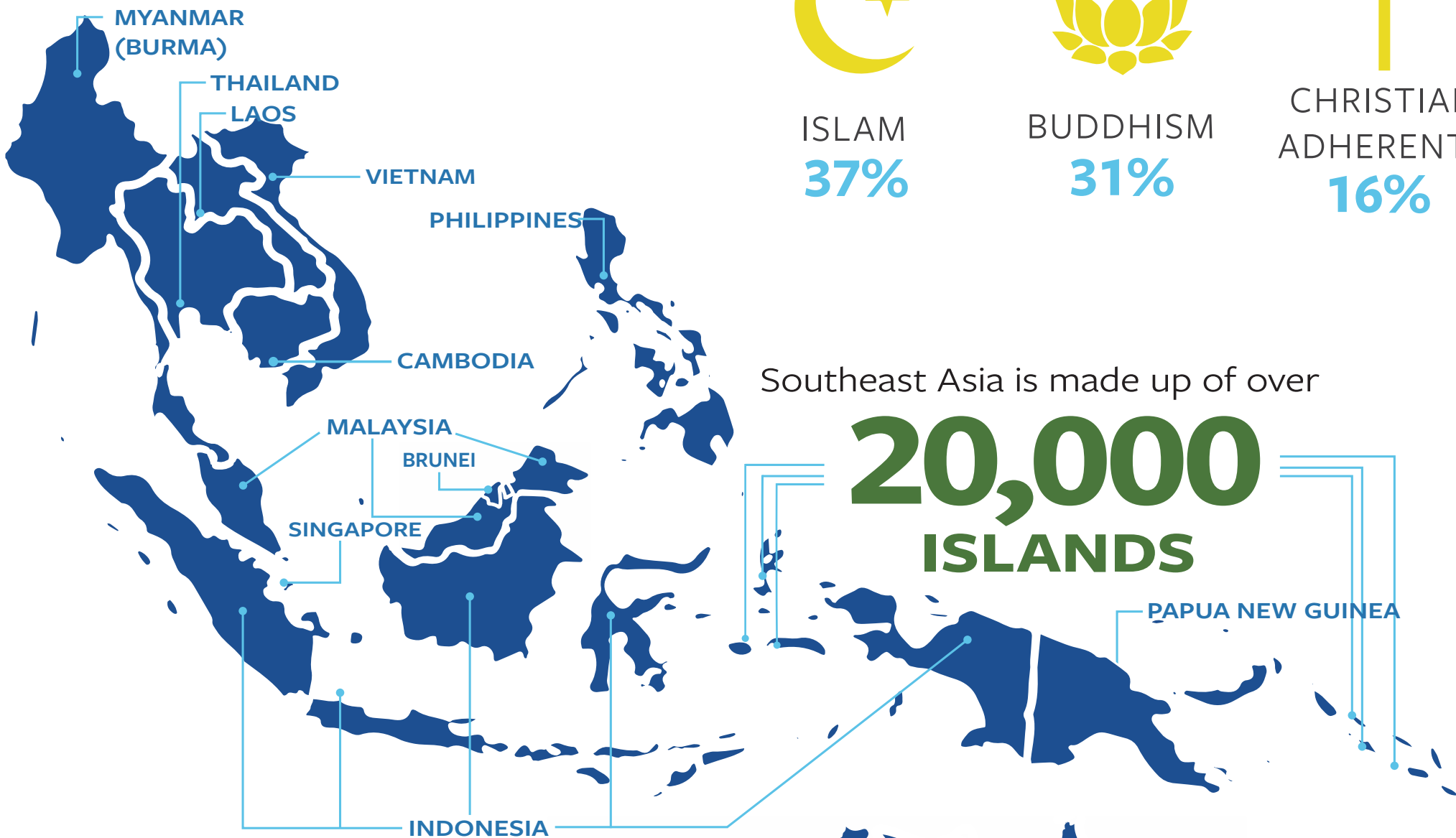
BUDDHISM
31%



CHRISTIAN
ADHERENTS
16%



CATHOLICISM
8%



Southeast Asia is made up of over

20,000
ISLANDS

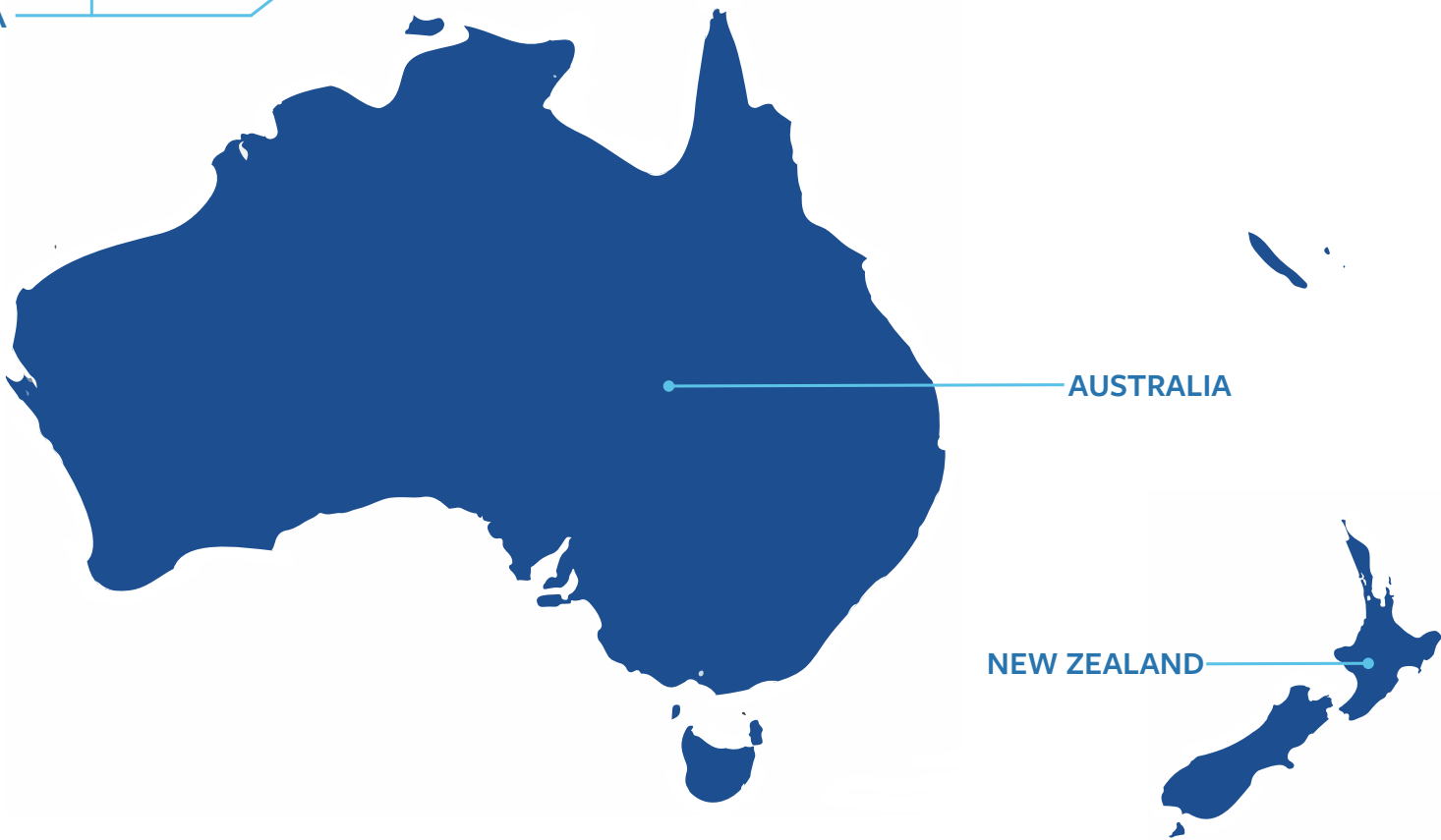
2,626
PEOPLE
GROUPS

615
MILLION
PEOPLE



JAKARTA | BANGKOK | MANILA

3 of the world's
TOP 20 cities are
found in
Southeast Asia.



601
UNREACHED

294
UNENGAGED
UNREACHED

Indonesia is home to more
Muslims THAN ANY OTHER
COUNTRY ON EARTH.