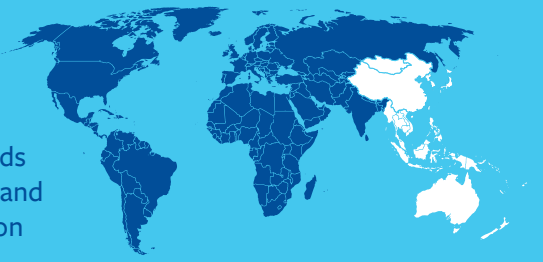
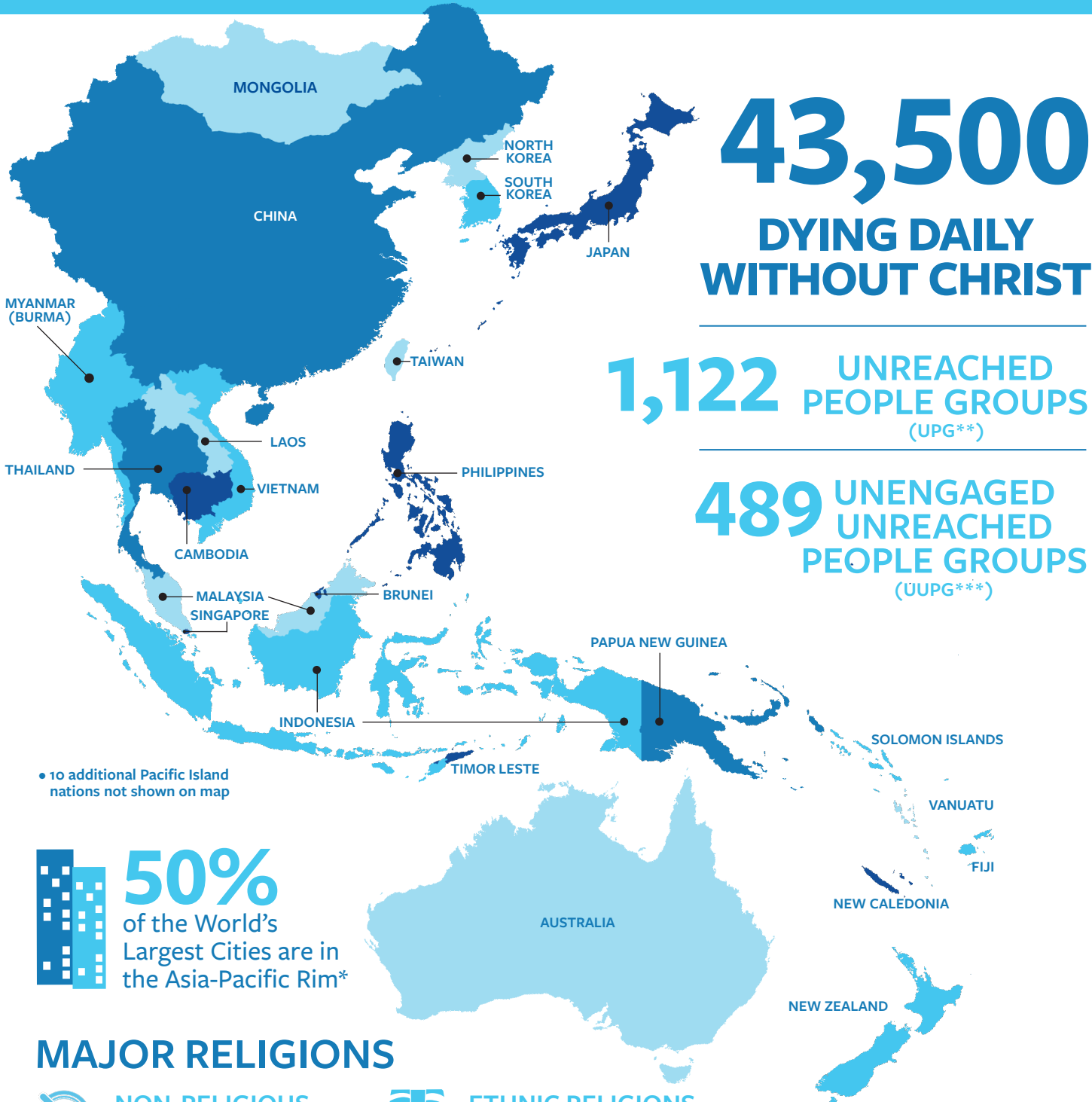


# Asian Pacific Rim Peoples




From the megacities of China, Japan, and South Korea to remote Mongolian grasslands and isolated Pacific islands, from the Himalayan mountains of Tibet to the rice fields and rain forests of Southeast Asia, this region is vibrant and diverse. It is home to 2.3 billion people and 3,355 people groups, over 95% of whom are living in spiritual darkness.



## MAJOR RELIGIONS

 **NON-RELIGIOUS**  
624 Million (27%)

 **ETHNIC RELIGIONS**  
527 Million (25%)

 **BUDDHISM**  
483 Million (21%)

 **ISLAM**  
266 Million (11%)

**imb**  
INTERNATIONAL  
MISSION BOARD

[imb.org/APAC](http://imb.org/APAC)

\* 10 of Top 20 Largest Cities, including Top 4

\*\* UPGs are people groups with less than two percent evangelical Christian population and where there are ongoing church planting strategies.

\*\*\* UUPGs are people groups who are unreached with less than two percent evangelical Christian population and where there are no active church planting strategies.

# Asian Pacific Rim Peoples

# 43,500

## DYING DAILY WITHOUT CHRIST

# 1,122 UNREACHED PEOPLE GROUPS (UPG\*\*)

# 489 UNENGAGED UNREACHED PEOPLE GROUPS (UUPG\*\*\*)

## MAJOR RELIGIONS

 **NON-RELIGIOUS**  
624 Million (27%)

 **BUDDHISM**  
483 Million (21%)

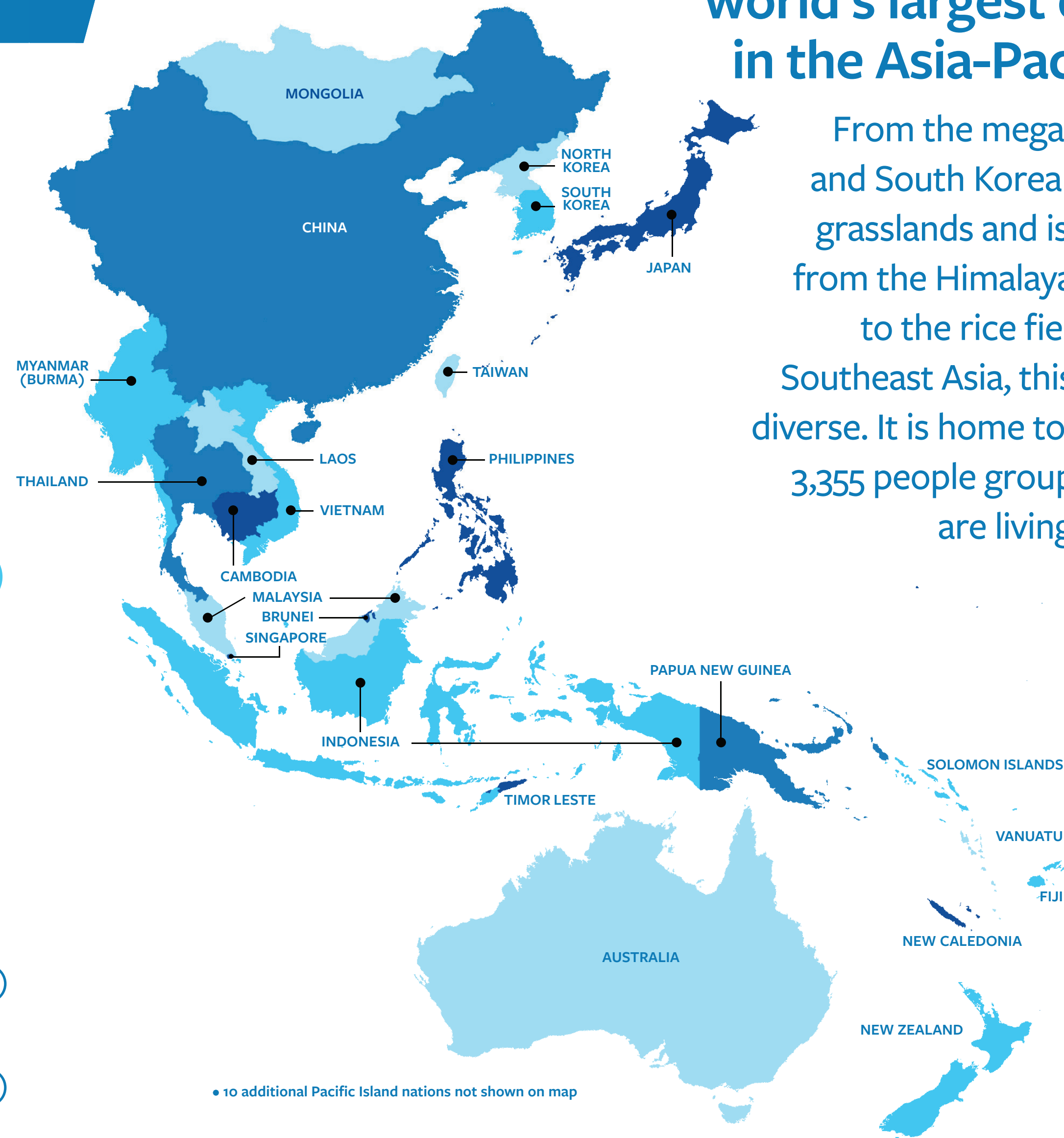
 **ETHNIC RELIGIONS**  
527 Million (25%)

 **ISLAM**  
266 Million (11%)

**50%** of the world's largest cities are in the Asia-Pacific Rim\*



From the megacities of China, Japan, and South Korea to remote Mongolian grasslands and isolated Pacific islands, from the Himalayan mountains of Tibet to the rice fields and rain forests of Southeast Asia, this region is vibrant and diverse. It is home to 2.3 billion people and 3,355 people groups, over 95% of whom are living in spiritual darkness.



• 10 additional Pacific Island nations not shown on map

**imb**  
INTERNATIONAL  
MISSION BOARD

[imb.org/APAC](http://imb.org/APAC)

\* 10 of Top 20 Largest Cities, including Top 4

\*\* UPGs are people groups with less than two percent evangelical Christian population and where there are ongoing church planting strategies.

\*\*\* UUPGs are people groups who are unreached with less than two percent evangelical Christian population and where there are no active church planting strategies.